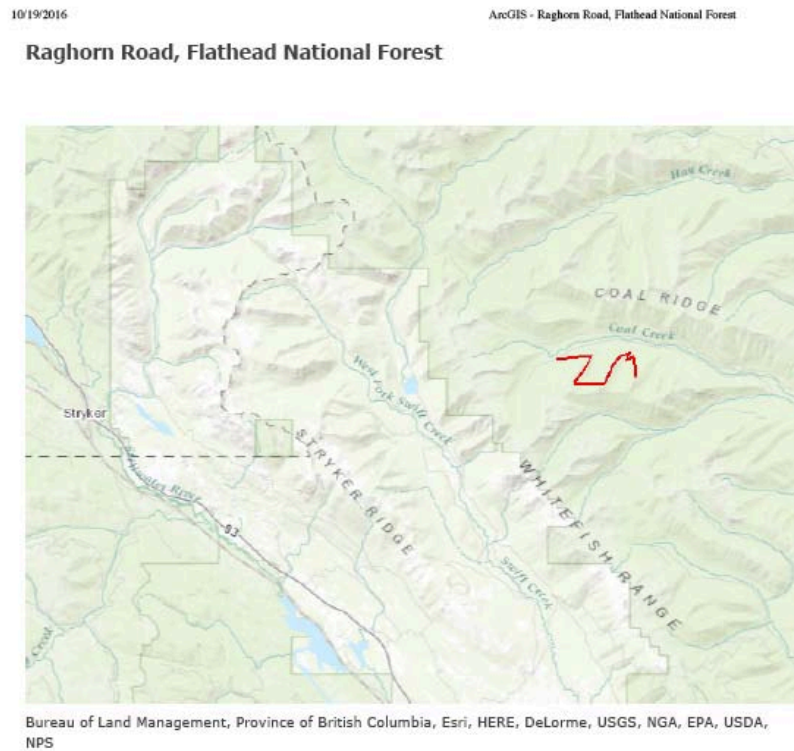


## Maps of Area

General area:



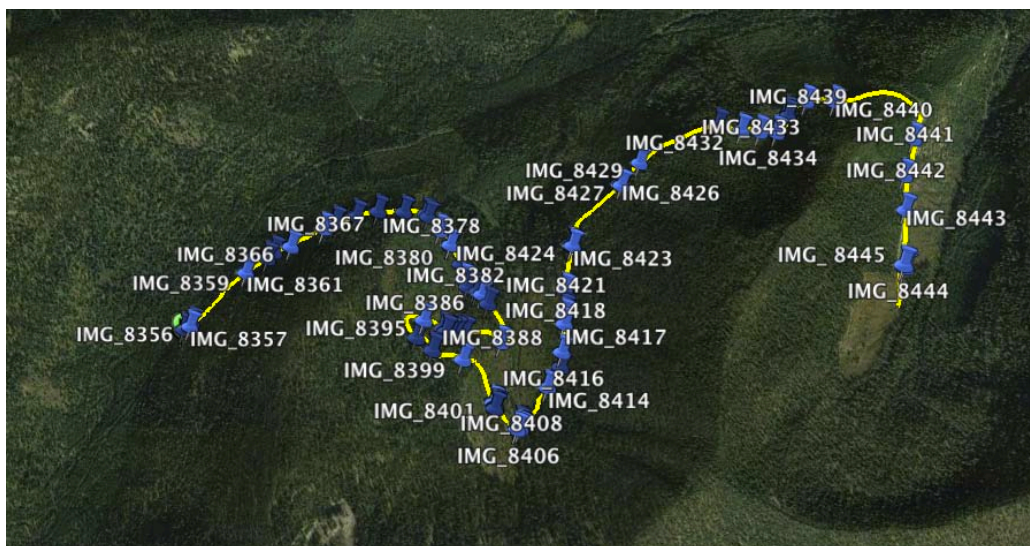
Zoomed in:



General area of photographs, Google Earth:



Zoomed in waypoints of photographs (see Attachment A):



U.S. EPA, Water Quality Assessment and TMDLs for the Flathead River Headwaters Planning Area, Montana (Dec. 31, 2004), page 148:

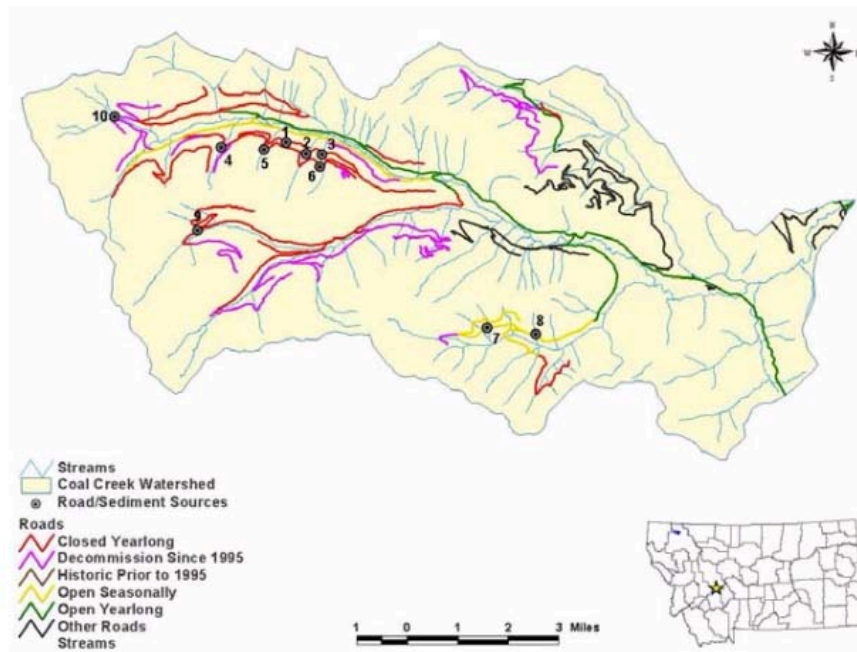


Figure 4-1. Location of roads in the Coal Creek watershed.

*Id.* page 149:

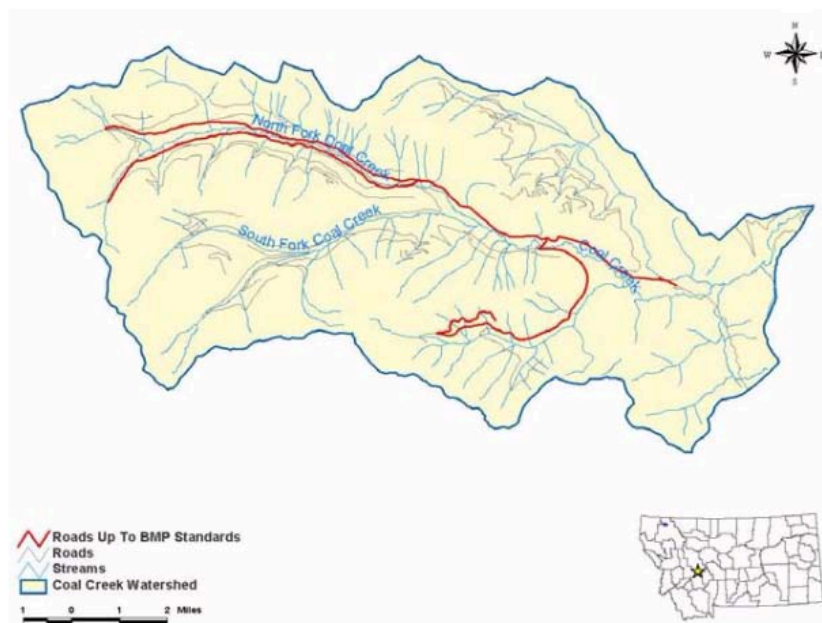


Figure 4-2. Roads up to full BMP standards in the Coal Creek watershed.

Bull trout critical habitat, from 2010 designation:

Federal Register / Vol. 75, No. 200 / Monday, October 18, 2010 / Rules and Regulations

64067

